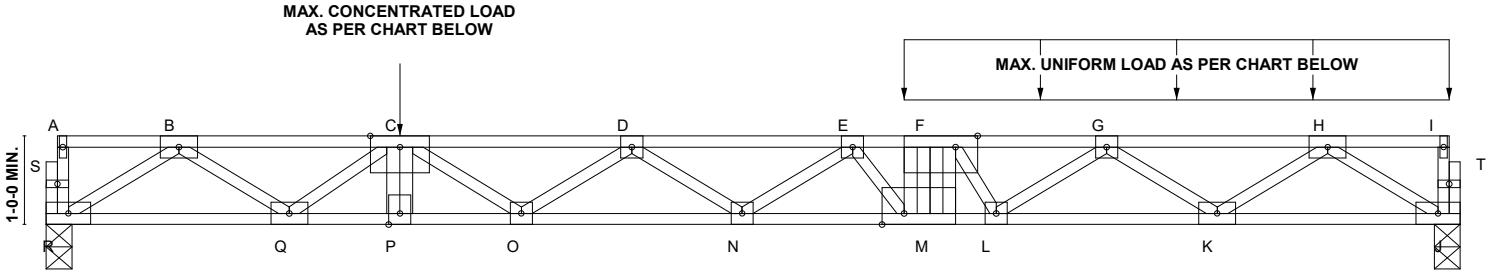




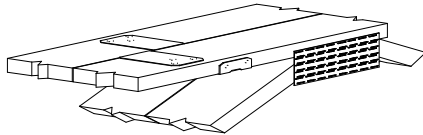
REFER TO INDIVIDUAL TRUSS DESIGN FOR PLATE SIZES AND LUMBER GRADES



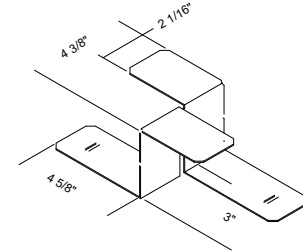
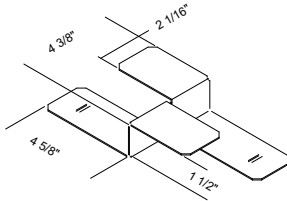
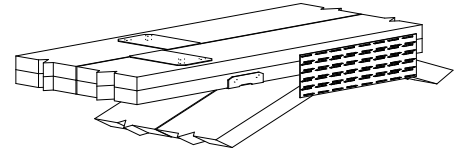
MAX. CONCENTRATED LOAD AS PER CHART BELOW

MAX. UNIFORM LOAD AS PER CHART BELOW

FTC32 / FTC1



FTC32-2 / FTC2



**USP FLOOR TRUSS CLIPS - FTC SERIES**

TRUSS SIZE	USP STOCK NO.	MAX. CONC. LOAD ( lbs. ) PER CLIP		MAX. TRANSFER LOAD ( lbs. ) PER CLIP		MAX. UNIFORM LOAD ( plf ) 24" O.C. SPACING	
		SP / DOUG-FIR	SPF	SP / DOUG-FIR	SPF	SP / DOUG-FIR	SPF
3 x 2	FTC32	1360	1180	680	590	680	590
( 2 ) 3 x 2	FTC32-2	1360	1180	680	590	680	590
4 x 2	FTC1	1730	1500	865	750	865	750
( 2 ) 4 x 2	FTC2	1730	1500	865	750	865	750

TRUSS SIZE	USP STOCK NO.	FASTENER SCHEDULE
3 x 2	FTC32	( 10 ) 10d x 1-1/2"
( 2 ) 3 x 2	FTC32-2	( 10 ) 10d x 1-1/2"
4 x 2	FTC1	( 10 ) 10d
( 2 ) 4 x 2	FTC2	( 10 ) 10d

FOLLOW USP INSTALLATION INSTRUCTIONS. USE ALL SPECIFIED FASTENERS.

MAX. UNIFORM LOAD ( plf ) REQUIRES FTC CLIPS TO BE PLACED AT A 24" O.C. MAX. SPACING ALONG THE LOADED CHORD.

10d x 1-1/2" NAILS ARE 9 GAUGE (0.148" DIAMETER X 1-1/2" LONG)