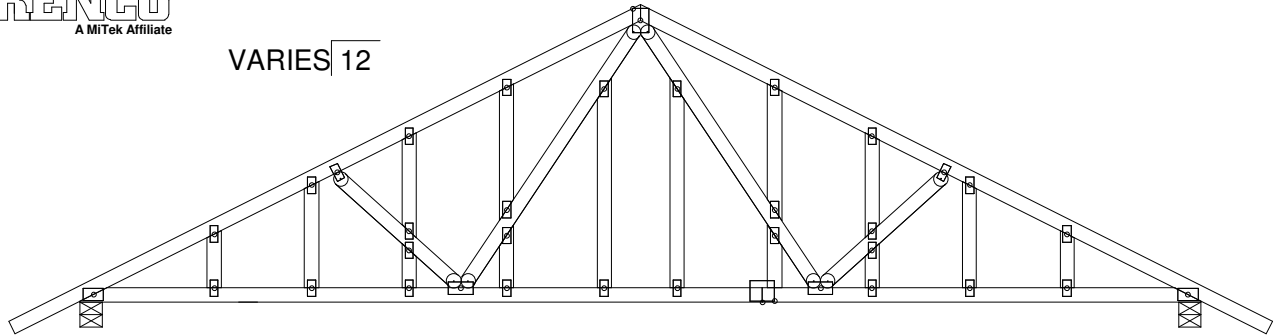


MiTek USA, Inc.



**REFER TO ENGINEERED TRUSS DRAWING  
FOR EACH INDIVIDUAL TRUSS.**



**NOTE: GABLE STUDS MAY BE ATTACHED WITH 1.5X4 OR 2X3  
MITEK MT20 PLATES OR WITH (2) 10d (0.131" X 3") TOE-NAILS**

**SEE MITEK STANDARD GABLE END DETAIL FOR  
GABLE STUD BRACING REQUIREMENTS.**

TRUSS DESIGNED FOR WIND LOADS  
IN THE PLANE OF THE TRUSS ONLY.