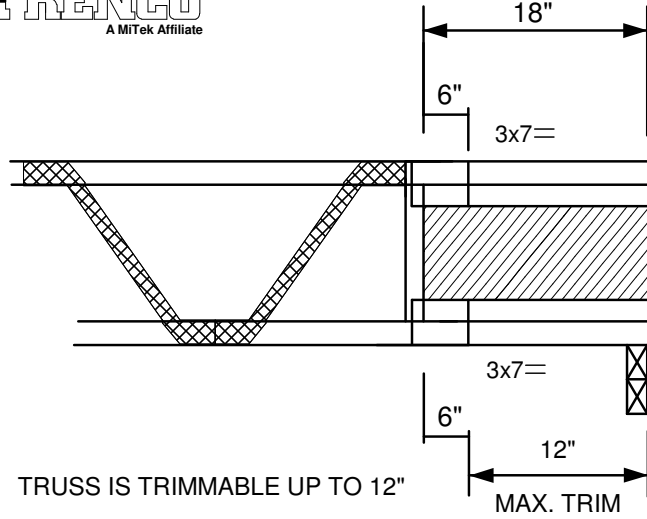


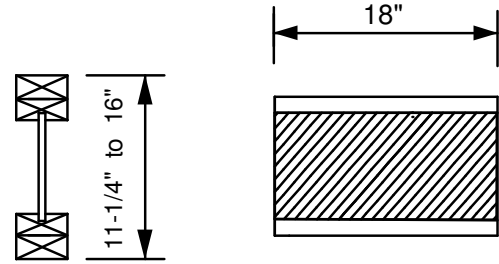
MiTek USA, Inc.
 ENGINEERED BY
TRENCO
 A MiTek Affiliate

SEE THE MiTek TRUSS DESIGN
 REFERENCING THIS DETAIL
 FOR ADDITIONAL DESIGN INFORMATION



TRUSS IS TRIMMABLE UP TO 12"
 MINIMUM BEARING SIZE IS 1-3/4"
 MAX REACTION = 1320 lbs

8-1/4" to 13"
 PRE-FABRICATED
 WOOD "I - JOIST "
 PLATED IN PLANE OF TRUSS



WOOD "I - JOIST " MINIMUM REQUIREMENTS		
FLANGE TO MATCH TRUSS CHORD SIZE		
1-3/4" REACTION LIMIT WITHOUT WEB STIFFENER MUST BE = TO OR > THAN REACTIONS SHOWN		
FLANGE Ft	3x2 = 818 psi	4x2 = 566 psi