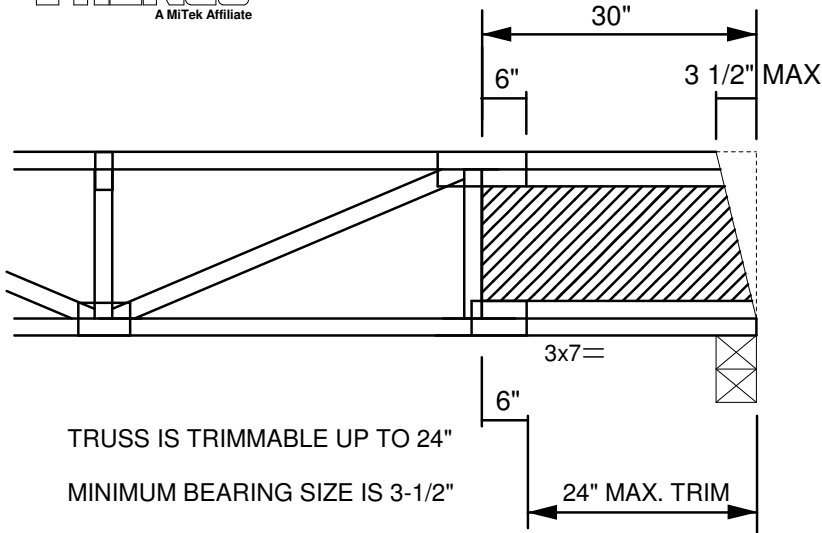
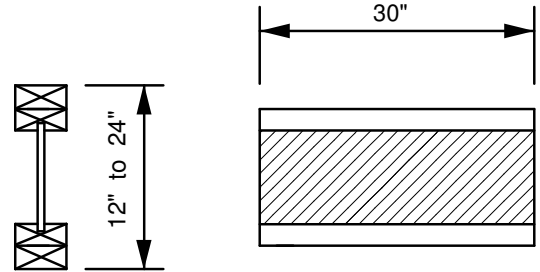


SEE THE MiTek TRUSS DESIGN  
REFERENCING THIS DETAIL  
FOR ADDITIONAL DESIGN INFORMATION



9" to 21"  
PRE-FABRICATED  
WOOD "I - JOIST "  
PLATED IN PLANE OF TRUSS



TRUSS IS TRIMMABLE UP TO 24"  
MINIMUM BEARING SIZE IS 3-1/2"

| WOOD "I - JOIST " MINIMUM REQUIREMENTS  |           |                |               |
|---|-----------|----------------|---------------|
| FLANGE MUST MATCH TRUSS CHORDS<br>IN BOTH SIZE AND SPECIES                            |           |                |               |
| 1-3/4" REACTION LIMIT WITHOUT WEB STIFFENER<br>MUST BE = TO OR > THAN REACTIONS SHOWN |           |                |               |
| SP  | FLANGE Ft | 3x2 = 1066 psi | 4x2 = 738 psi |
| SPF   | FLANGE Ft | 3x2 = 893 psi  | 4x2 = 618 psi |

| MAX REACTION |          |          |
|--------------|----------|----------|
| DEPTH        | SP       | SPF      |
| 12"          | 1033 lbs | 865 lbs  |
| 13"          | 1171 lbs | 980 lbs  |
| 14"          | 1309 lbs | 1096 lbs |
| 15"          | 1320 lbs | 1211 lbs |
| 16" - 24"    | 1320 lbs | 1320 lbs |