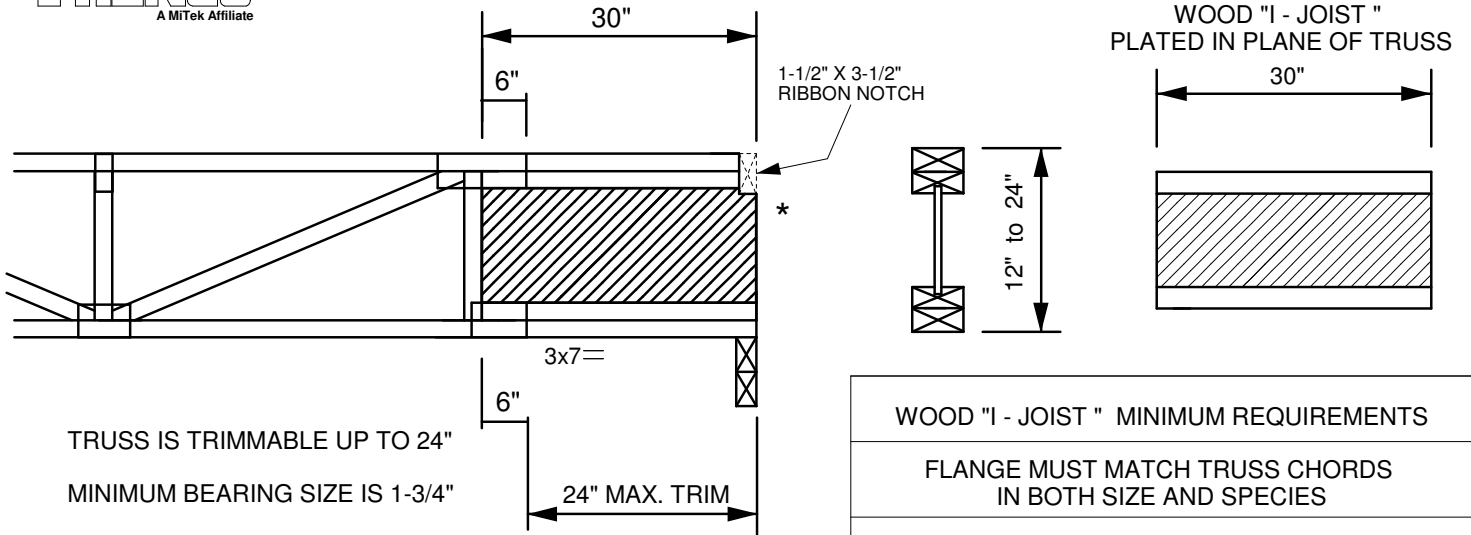


MiTek USA, Inc.



SEE THE MiTek TRUSS DESIGN  
REFERENCING THIS DETAIL  
FOR ADDITIONAL DESIGN INFORMATION



TRUSS IS TRIMMABLE UP TO 24"  
MINIMUM BEARING SIZE IS 1-3/4"

| WOOD "I - JOIST " MINIMUM REQUIREMENTS  |        |    |                                 |
|---|--------|----|---------------------------------|
| FLANGE MUST MATCH TRUSS CHORDS<br>IN BOTH SIZE AND SPECIES                            |        |    |                                 |
| 1-3/4" REACTION LIMIT WITHOUT WEB STIFFENER<br>MUST BE = TO OR > THAN REACTIONS SHOWN |        |    |                                 |
| SP  | FLANGE | Ft | 3x2 = 1066 psi    4x2 = 738 psi |
| SPF   | FLANGE | Ft | 3x2 = 893 psi    4x2 = 618 psi  |

| MAX REACTION<br>(Including loads from above) |          |          |
|--|----------|----------|
| DEPTH  | SP       | SPF      |
| 12"  | 1033 lbs | 865 lbs  |
| 13"  | 1171 lbs | 980 lbs  |
| 14"  | 1309 lbs | 1096 lbs |
| 15"  | 1320 lbs | 1211 lbs |
| 16" - 24"                                    | 1320 lbs | 1320 lbs |

\* RIM BOARD REQUIRED TO SUPPORT LOADS FROM ABOVE