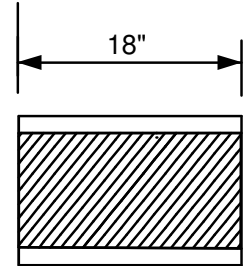
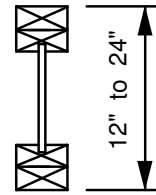
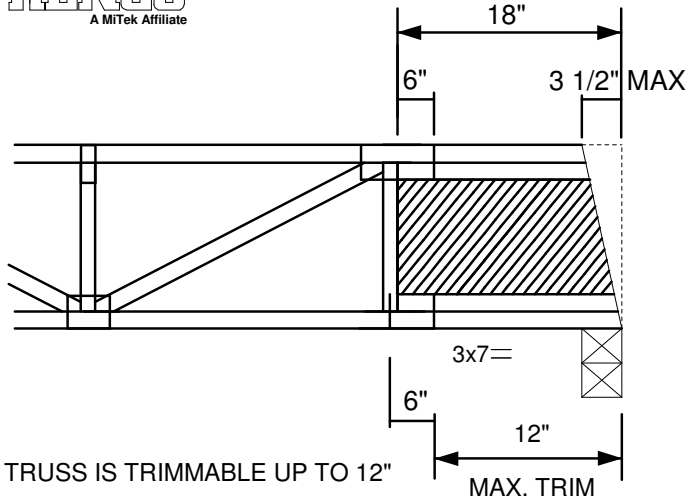


SEE THE MiTek TRUSS DESIGN REFERENCING THIS DETAIL FOR ADDITIONAL DESIGN INFORMATION

9" to 21" PRE-FABRICATED WOOD "I - JOIST " PLATED IN PLANE OF TRUSS



TRUSS IS TRIMMABLE UP TO 12"
 MINIMUM BEARING SIZE IS 3-1/2"
 MAX REACTION = 1320 lbs

WOOD "I - JOIST " MINIMUM REQUIREMENTS		
FLANGE TO MATCH TRUSS CHORD SIZE		
1-3/4" REACTION LIMIT WITHOUT WEB STIFFENER MUST BE = TO OR > THAN REACTIONS SHOWN		
FLANGE Ft	3x2 = 736 psi	4x2 = 509 psi